

# Puget Sound Beekeepers Association

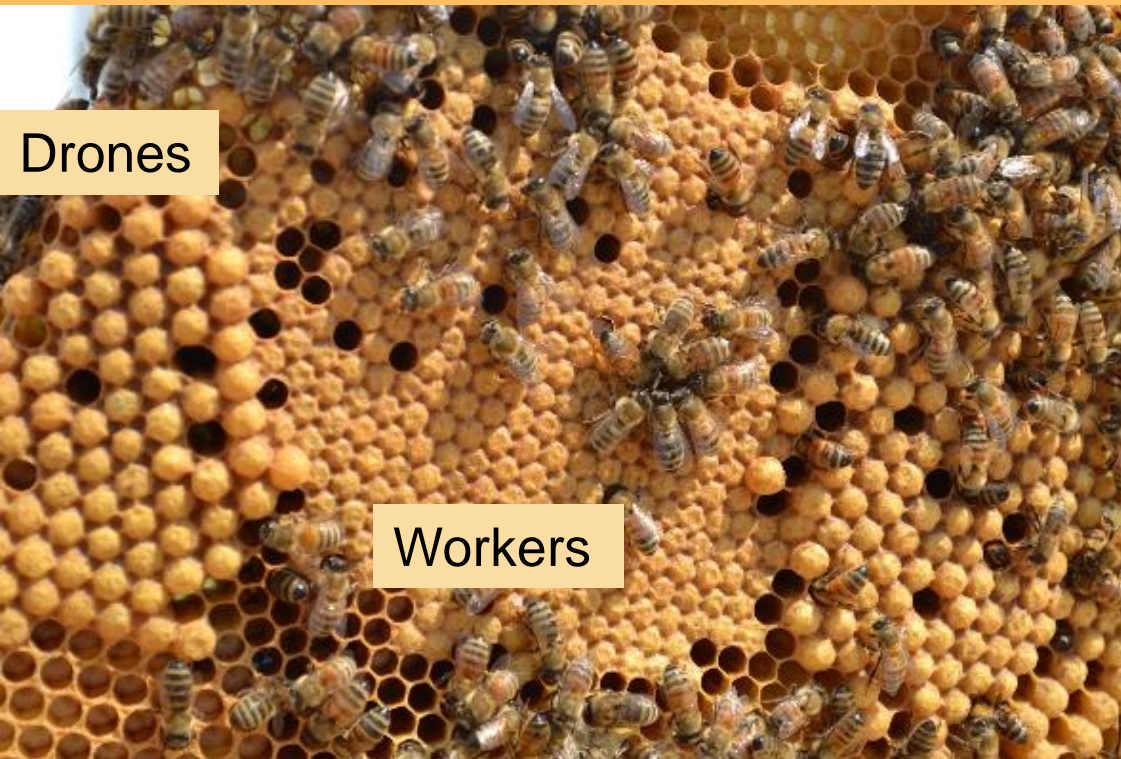


Tracy Klein  
*Master Beekeeper*



Pre-Blackberry Build Up

# What Do Cells Looks Like?



**BTW, There are too many drones here**



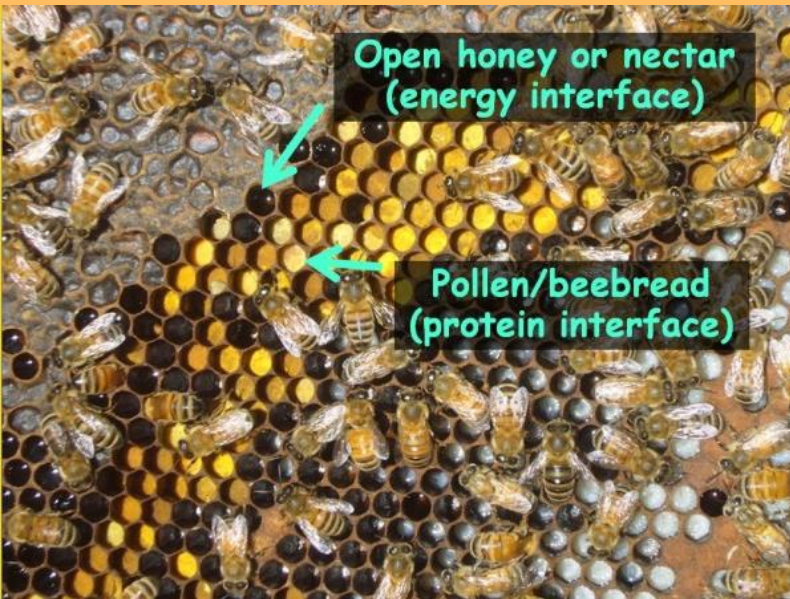
**Let it be, they  
want a new  
queen!**



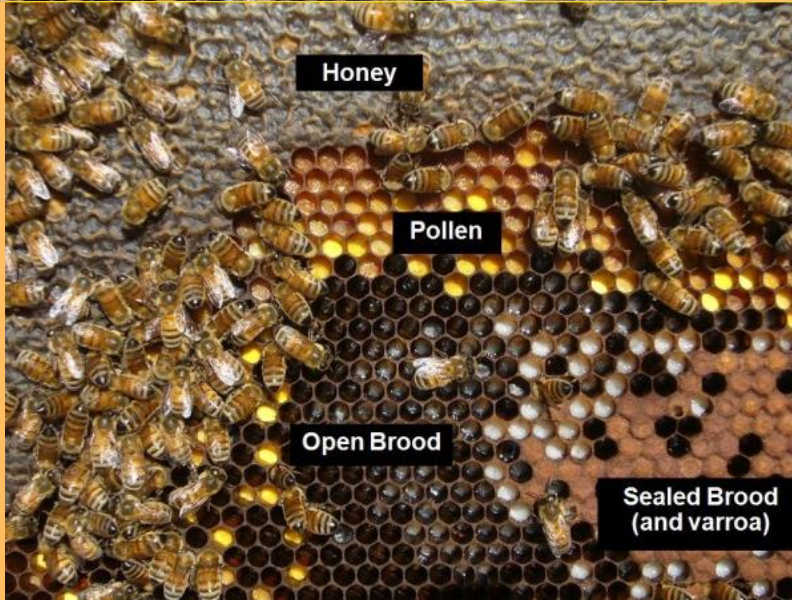
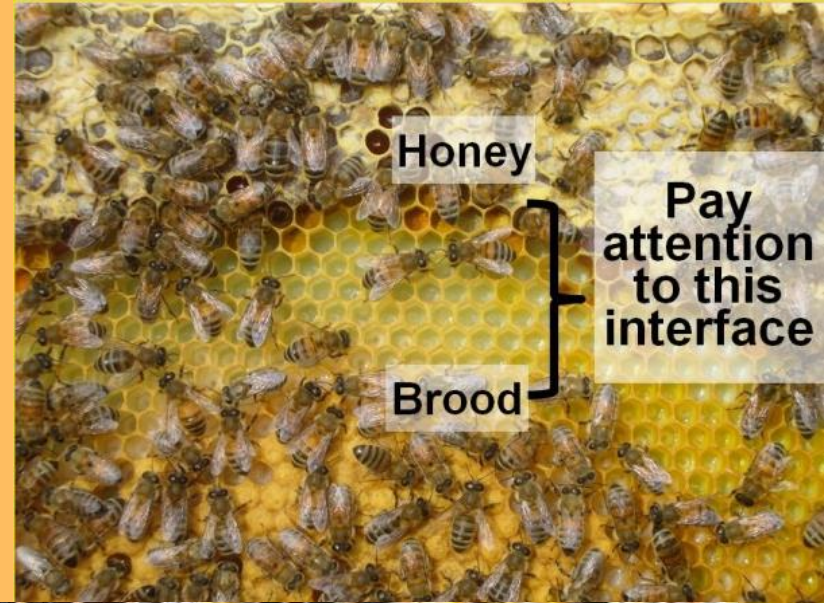


# Maximize Colony Build Up

Photos Courtesy of Randy Oliver, ScientificBeekeeping.com



*Learn to  
read  
whether  
your  
bees are  
hungry  
and for  
what*





# Do I Add Another Box?

- No



- Yes!



# Should I Feed 1:1 Syrup With My Super On?

- **For Sure No**

- Already have drawn comb?
- I'm planning to sell my honey

- **Maybe, Yes**

- New frames with no drawn comb
- Frames with partly drawn comb before the blackberries bloom



# Providing Custom Need-Based Space



- 2 Large colonies with LOTS of bees & overwintered fall queens
- Notice upper entrance preference

- Colony on right swarmed (Oops!)
- Colony with 2 supers is the typical size for a 1<sup>st</sup> year colony

*Different color patterns reduce drift between colonies*

# A Word On Queen Excluders

*Keeps the queen out of your supers + keeps the honey comb nice & light*

- Openings run parallel with frames (*easier for workers to get through*)
- Openings are perpendicular to frames (*harder for workers to get through*)



# Upper Entrances Increase Honey Yield



Using Imrie shims speeds up nectar storage & evaporation

- Above the queen excluder so workers bypass brood area
- Every 2nd box
- Inner cover with entrance just under

*Note: You must stay ahead of the nectar storage space*

*AND*

*The brood nest space to prevent swarming*



# Continuing Education

- Books
- Websites
  - [Scientificbeekeeping.com](http://Scientificbeekeeping.com)
  - [Honeybeesuite.com](http://Honeybeesuite.com)
- Check PSBA website for apiary work parties
- Neighborhood captains
- YouTube Videos
- Apprentice & Journeyman Beekeeper program

