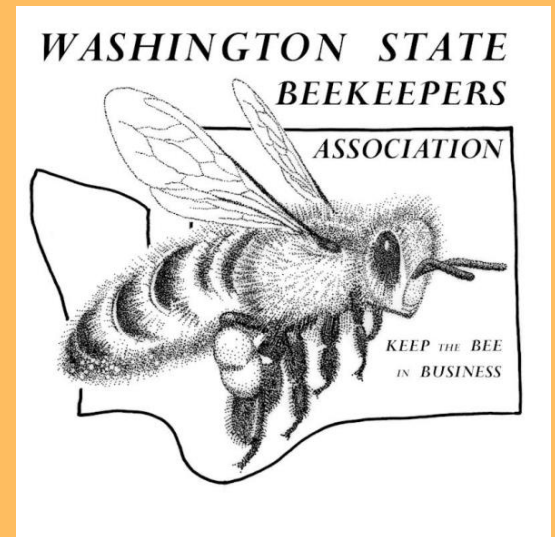


Puget Sound Beekeepers Association



Kathy Cox
Journeyman Beekeeper
Dawn Beck
Apprentice Beekeeper



Spring Management:
I have my bees installed... Now what?!

Feeding Your Bees

- **Spring/Summer**

- 1:1 sugar/water (mixes cold)
 - Additives to prevent mold & fermentation (optional)
- Pollen patties for spring build up
- Generally not when honey supers on unless building wax on new foundation

- **Fall**

- 2:1 sugar/water syrup in fall after honey supers removed if nectar dearth or bees low on stores (needs heat to dissolve)
- Remove feeder when temps get low, the bees won't take it any more anyway

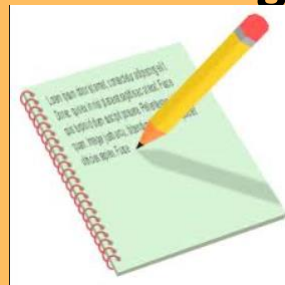
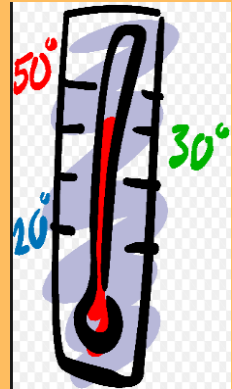
- **NOTE:** *DO NOT feed your bees honey from the store or from unknown sources, it can contain foulbrood spores. Also do not feed brown sugar, molasses or high fructose corn syrup*



syrup<http://beekeeperlinda.blogspot.com/2011/10/using-rapid-feeder.html>

Inspecting Your Hive(s)

- Have a plan – what is your purpose for opening the hive(s)
 - *Yes, It's possible to love them too much*
- Bring tools & a notebook (or online device) to record your inspection
- Get your woodenware ready ahead of time
- Only manipulate frames if over 55 degrees F
- Work your hive from the back or side – don't block the entrance
- Avoid opening hives while it's raining or windy
- Best to complete all inspections during the afternoon while foragers are in the field



Exterior Inspection



- Watch at front entrance
 - Observe foragers and note whether/what percentage are returning with pollen
 - Are yellow jackets or someone else's bees trying to get in?
- Orientation flights occurring?
- Have ants or beetles on outside?
- Observation/Sticky boards
 - Wax debris determines size & location of cluster
 - Dead mites?
 - Wax moth, SHB or mouse droppings?
- Sound (quiet buzzing or loud roaring)



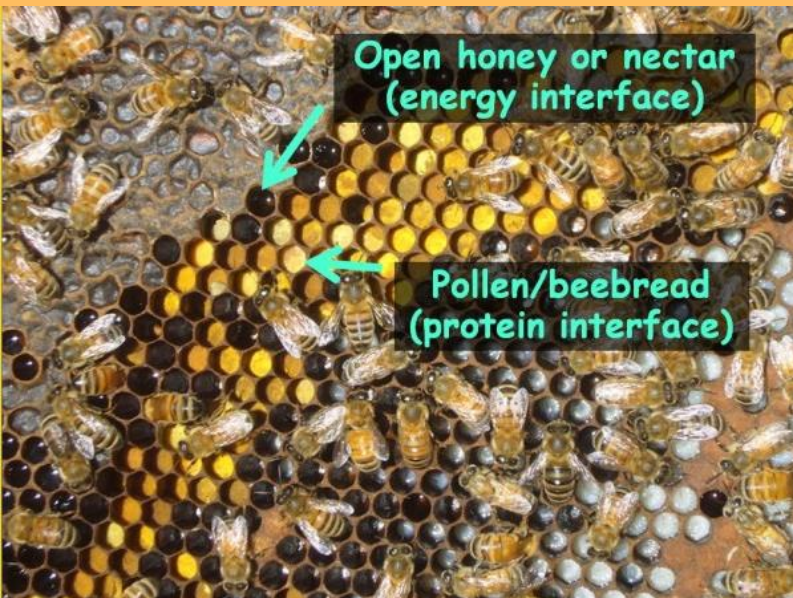
Inspecting Inside Hive(s)

- **Light smoker & use smoke sparingly**
 - A few puffs in the entrance, then in the top when you crack open the inner cover
 - Smoke yourself if necessary to reduce defensiveness
 - Smoke masks alarm pheromone
- **Don't worry about finding the queen**
 - If there are eggs and larvae, there is a queen
- **Gently stack boxes you are not working**
- **Work gently/slowly from one side to the other**
 - Avoid sudden movements
 - Be careful not to smash your queen
- **Keep gentle bees – if your bees are consistently defensive for no reason, re-queen immediately**
- **Record what you see & create your plan for next time**

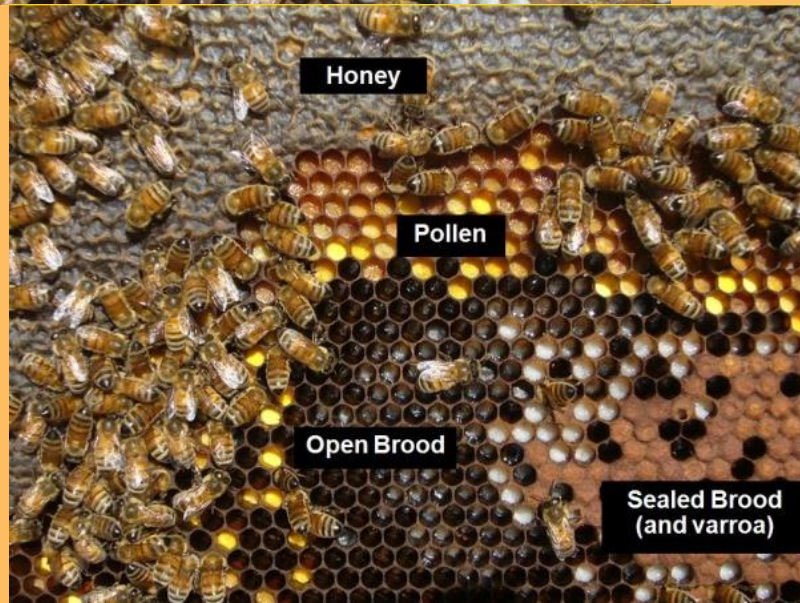


What It Should Look Like Inside

Photos Courtesy of Randy Oliver, <http://scientificbeekeeping.com/>



*Learn to
read
whether
your
bees are
hungry*



What Am I Seeing?



Workers

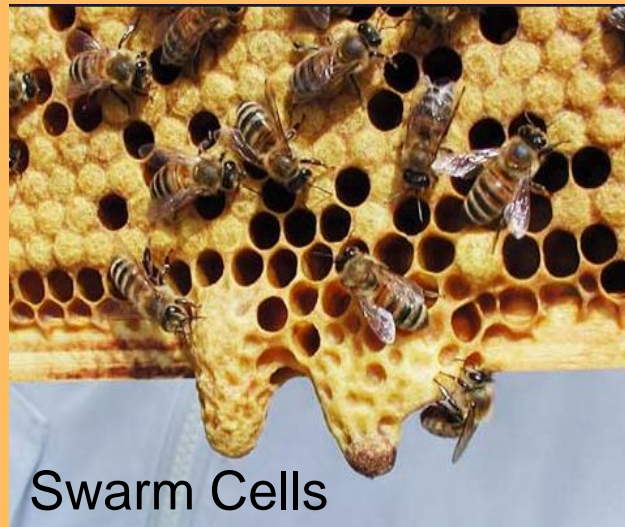
Drones



Supercedure Cells



Caution: Your queen died or your workers feel she is defective. Best to let them do their thing



Swarm Cells

Action needed to prevent a swarm (if it's not too late already)!

Consider a split



WHAT'S ON YOUR MIND?